

For more info about the photovoltaic mounting system solution, please call us or look through Mibet' s website.



MRac[®] Accessories Brochure



XIAMEN MIBET NEW ENERGY CO.,LTD.

Add: No.69 Xintian Road, Jimei District, Xiamen, China

Tel: 86-592-3754999,86-592-6771595

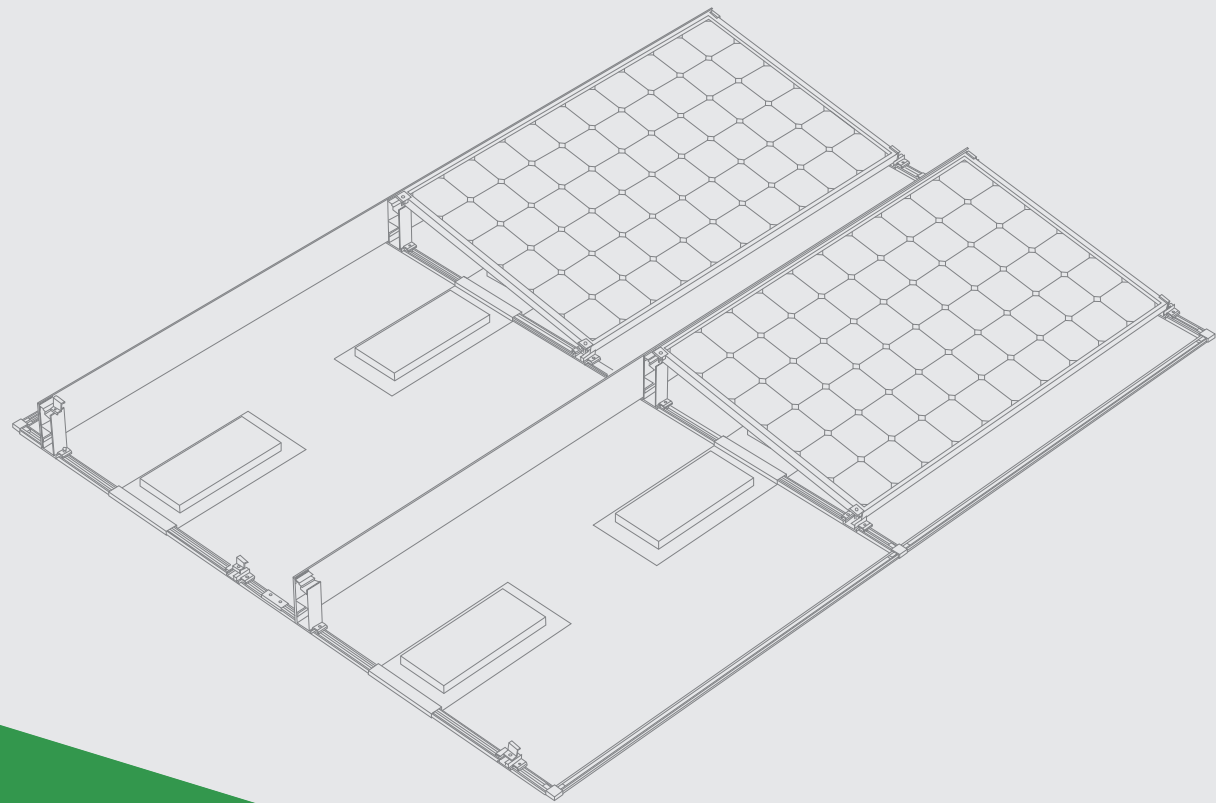
Fax: 86-592-6771575

E-mail: sales@mbt-energy.com

Web: www.mbt-energy.com

MIBET ENERGY

选择绿色 选择迈贝特 | do My BesT , to be the best!



Enterprise Profile

Xiamen Mibet New Energy Co., Ltd. is a joint-venture company with production bases located in Xiamen and Tianjin. Subsidiaries are set up in Japan and Australia. As a high-tech enterprise which provides advancing patented technology and high-efficiency service in renewable industry, Mibet Energy, equipped with varied intellectual property rights, specializes in the designing and manufacturing of solar PV mounting structures, including smart tracker system, ground mounting system, rooftop mounting system and floating PV system, and devotes itself to offering the most stable, reliable and cost-effective solar PV mounting solutions. Since establishment, Mibet Energy has spearheaded the global renewable energy market and become highly recognized by clients at home and abroad with its solar mounting structures being sold to more than 100 countries and regions, satisfying the comprehensive needs of different types of projects.

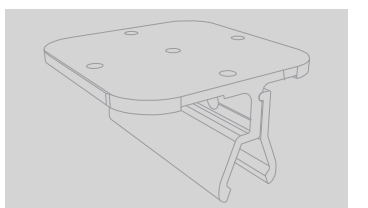
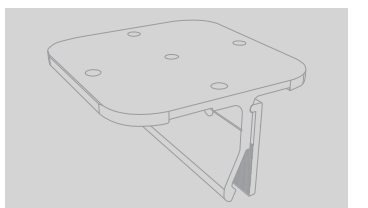
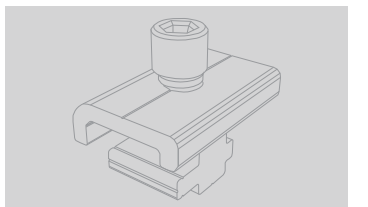
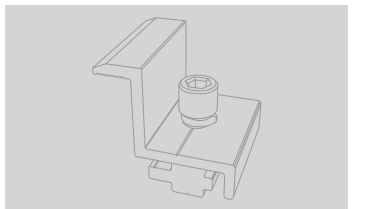
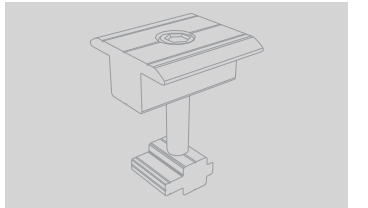
Led by an international R&D team, which consists of overseas returned scholars and professors in well-known universities, Mibet has launched a series of photovoltaic racking systems into PV market, such as MRac rooftop system, MRac ground system, MRac floating system, MRac smart tracking system, distributed pv mounting system, etc. Mibet's products have passed the ISO, TUV, UL, AS/NZS 1170 certification, etc, and become an industry leader in terms of the structural design and the system performance.

Besides, with strong marketing capability, Mibet not only has established a global marketing network, but also passed a series of certification, including the ISO9001:2008 quality system certification, ISO14001:2015 environmental management certification and OHSAS18001:2007 occupational health and safety management system certification. Our objective: leading the development of renewable industry and serving as top-class renewable enterprise!



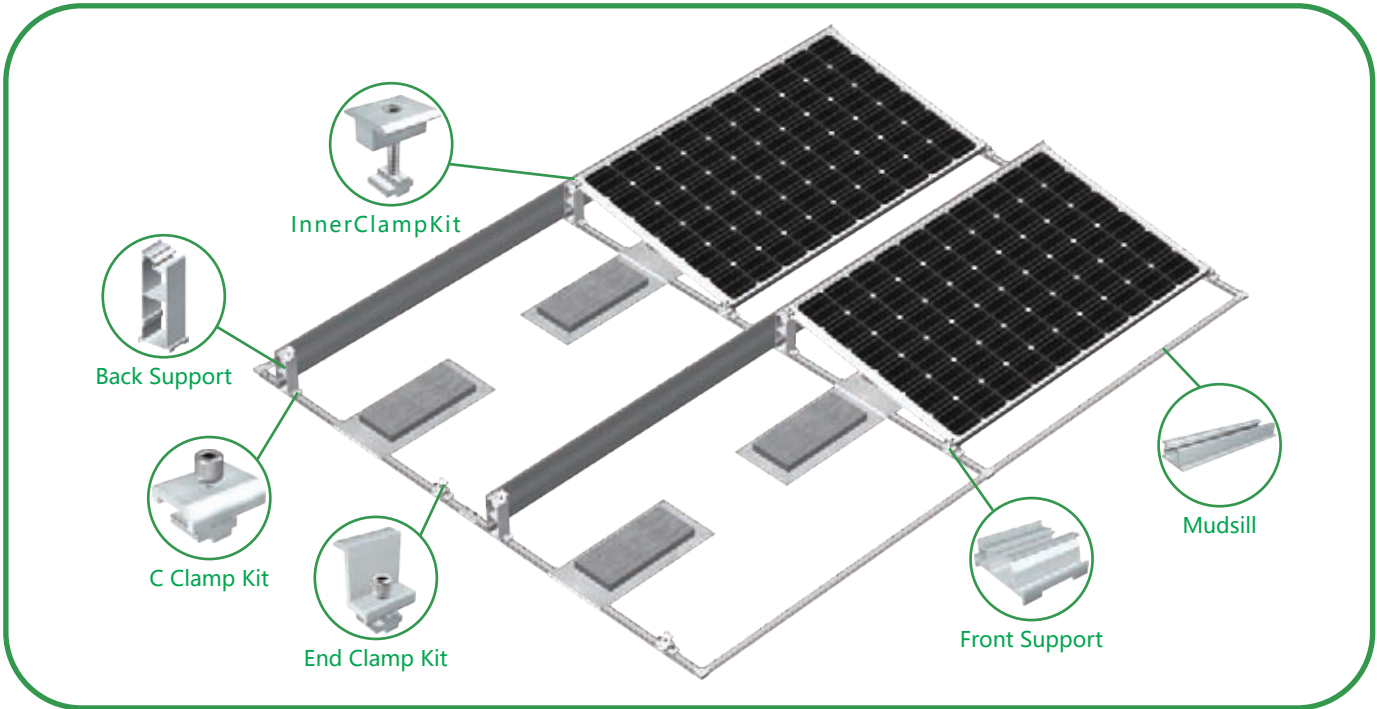
CATALOGUE

P03-04	—————	MRac Roof Solar PV Mounting System Matrix I
P05-06	—————	MRac Roof Matrix I(Symmetrical)
P07-08	—————	MRac Roof Solar PV Mounting System Matrix II
P09-10	—————	MRac Roof Matrix III
P11-12	—————	MRac Tile Roof Hook Solar PV Mounting System
P13-14	—————	MRac Kliplok
P15-16	—————	MRac Standing Seam Clamp
P17-18	—————	MRac Trapezoidal Metal
P19	—————	MRac L Feet Support & Hanger Bolt Support
P20	—————	MRac Adjustable Support
P21-22	—————	MRac Mini-Rail
P23	—————	MRac Accessories for MA Series
P24	—————	MRac Accessories for T Slot
P25-26	—————	MRac Accessories for DC Series
P27-29	—————	MRac Universal Accessories
P30-31	—————	MRac System Accessories
P32	—————	MRac After-sales & Service



MRac[®]

MRac Roof Solar PV Mounting System Matrix I



Technical Parameters

System Name	MRac Roof Solar PV Mounting System Matrix I	Design Standard	AS/NZS 1170 、 DIN 1055 、 JIS C 8955: 2017
Installation Site	Flat Roof, Ground		International Building Code: IBC 2009
Foundation	Concrete Roof		California Building Code: CBC 2010
Tilt Angle	5 °, 10 °	Material	AL6005-T5 (Anodized)
Wind Load	60m/s	Fastener	SUS304 &Zinc-Nickel Alloy Electroplated Steel
Snow Load	1.6KN/m ²	Small Components	AL6005-T5 (Anodized)
Applicable Solar Module	Framed	Color	Silver or Customized
Panel Layout	Landscape	Warranty	10-Year Warranty

Overview

MRac Roof Solar PV Mounting System Matrix I is a non-penetration solution for flat rooftop. The system achieves high wind resistance performance and fast onsite installation with concrete ballast and patented structure design.

Save Installation Time With Highly Pre-assembled Structure

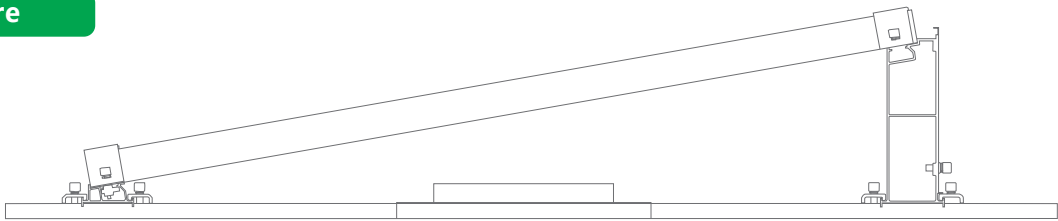
Customized design is available, flexible and multiple components can be chosen. Highly pre-assembled structure and no cutting or drilling on site save installation time and cost greatly.



Advantages

- > **High Durability Ensure the Structure Strength**
Professional structure design and high-density aluminum material ensure the stability and strength of the structure.
- > **Unique Matrix Design**
The matrix design further assures the stability of the whole system, and flexibly compatible with concrete block or ballast foundation.
- > **Reasonable Installation and Package Design**
Simplified components configuration lead to quicker installation and smaller package size, saving installation cost and freight.

Structure



Component Details

- 1

Front Support
Item No.: MR-RM1-FS
Specification: L60
Material: AL6005-T5(Anodized)
- 2

Back Support
Item No.: MR-RM1-BS
Specification: L60
Material: AL6005-T5(Anodized)
- 3

One - sided Ballasted Tray
Item No.: MR-RM1-OBT
Specification: 450*550
Material: Galvanized Sheet
- 4

Two-sided Ballasted Tray
Item No.: MR-RM1-TBT
Specification: 850*550
Material: Galvanized Sheet
- 5

End Clamp Kit
Item No.: MR-EC-ST
Components: End Clamp
Cross Module
Spring WasherM8
Hexagon Socket Head Bolt
- 6

U20 Inter Clamp Kit
Item No.: MR-IC-U20
Components: Inter Clamp
Cross Module
Spring WasherM8
Hexagon Socket Head Bolt
- 7

C Clamp Kit
Item No.: MR-CC-T
Components: C clamp
Cross Module
Spring WasherM8
Hexagon Socket Head Bolt
- 8

Wind Deflector
Item No.: MR-RM1-WD
Components: Flat Washer M8
Spring Washer M8
Hexagon Socket Head Bolt
- 9

Mudsill
Item No.: MR-RM1-M
Specification: L1350, L2700
Material: AL6005-T5(Anodized)
- 10

Splice for Mudsill
Item No.: MR-RM1-SpM
Material: AL6005-T5(Anodized)

Installation Guide

- 1

Place Mudsills as indicated in solution drawings.
- 2

Fasten Front Supports and Back Supports on the Mudsills by C Clamp Kit.
- 3

Fasten Ballasted Trays.
- 4

Put concrete on Blasted Tray.
- 5

Fasten Wind Deflector with Back Support by Hexagon Socket Bolt Kit.
- 6

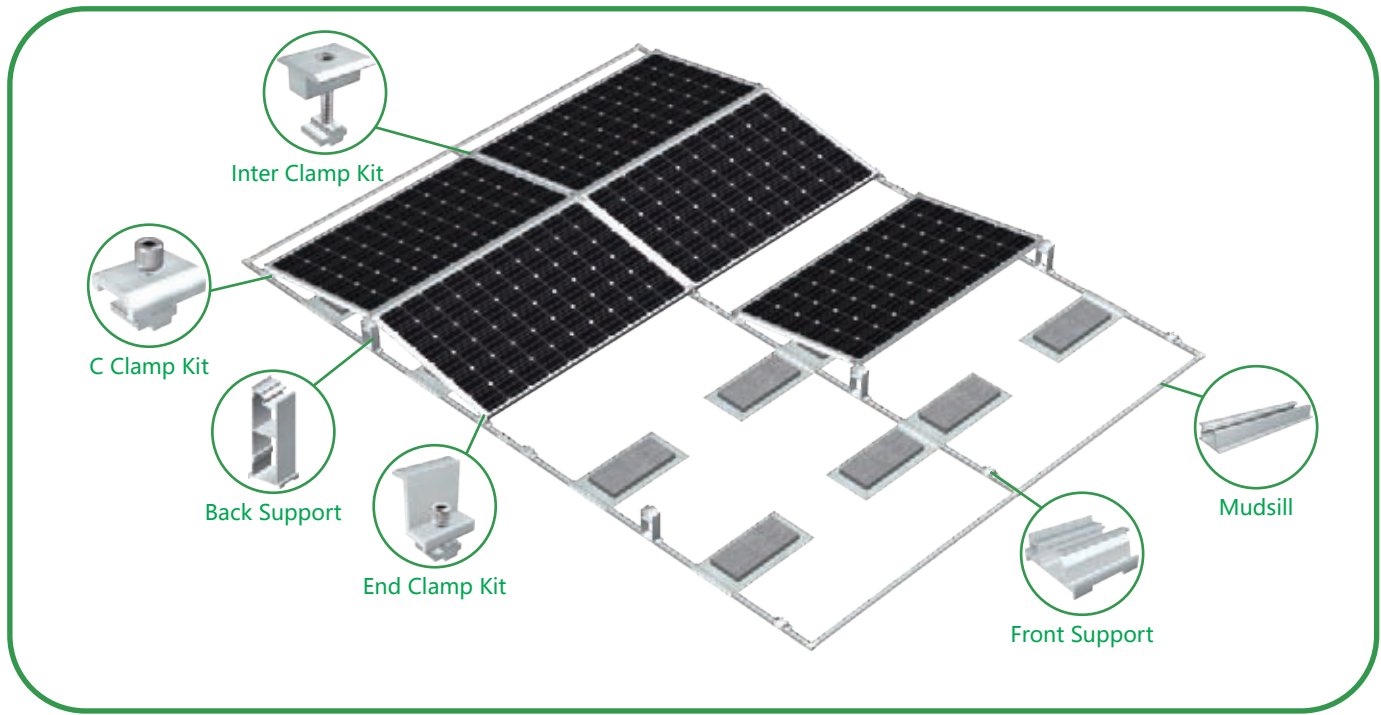
Fasten modules on the Front Supports and Back Supports.
- 7

Fasten modules by Inner Clamp Kits.
- 8

Complete installation.

MRac[®]

MRac Roof Solar PV Mounting System Matrix I



Technical Parameters

System Name	MRac Roof Solar PV Mounting System Matrix I	Design Standard	AS/NZS 1170 、 DIN 1055 、 JIS C 8955: 2017
Installation Site	Flat Roof ,Ground		International Building Code: IBC 2009
Foundation	Concrete Roof		California Building Code: CBC 2010
Tilt Angle	5 ° , 10 °	Material	AL6005-T5(Anodized)
Wind Load	60m/s	Fastener	SUS304 &Zinc-Nickel Alloy Electroplated Steel
Snow Load	1.6KN/m ²	Small Components	AL6005-T5 (Anodized)
Applicable Solar Module	Framed	Color	Silver or Customized
Panel Layout	Landscape	Warranty	10-Year Warranty

Overview

MRac Roof Solar PV Mounting System Matrix I is a non-penetration solution for flat rooftop. The system achieves high wind resistance performance and fast onsite installation with concrete ballast and patented structure design.

Save Installation Time With Highly Pre-assembled Structure



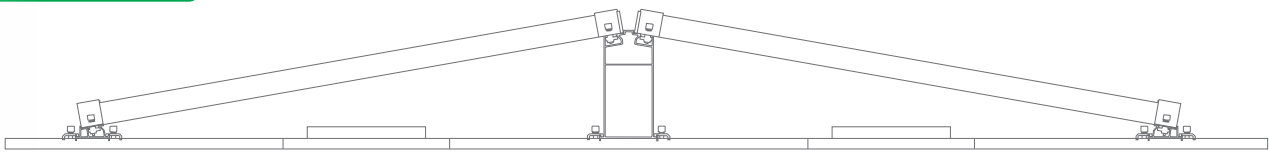
Customized design is available, flexible and multiple components can be chosen. Highly pre-assembled structure and no cutting or drilling on site save installation time and cost greatly.



Advantages

- > **High Durability Ensure the Structure Strength**
Professional structure design and high-density aluminum material ensure the stability and strength of the structure.
- > **Unique Matrix Design**
The matrix design further assures the stability of the whole system, and flexibly compatible with concrete block or ballast foundation.
- > **Reasonable Installation and Package Design**
Simplified components configuration lead to quicker installation and smaller package size, saving installation cost and freight.

Structure



Component Details

- 1

Front Support
Item No.: MR-RM1-FS
Specification: L60
Material: AL6005-T5(Anodized)
- 2

Back Support
Item No.: MR-RM1-BS
Specification: L60
Material: AL6005-T5(Anodized)
- 3

One - sided Ballasted Tray
Item No.: MR-RM1-OBT
Specification: 450*550
Material: Galvanized Sheet
- 4

Two-sided Ballasted Tray
Item No.: MR-RM1-TBT
Specification: 850*550
Material: Galvanized Sheet
- 5

End Clamp Kit
Item No.: MR-EC-ST
Components: End Clamp
Cross Module
Spring Washer M8
Hex Socket Head Bolt
- 6

U20 Inter Clamp Kit
Item No.: MR-IC-U20
Components: Inter Clamp
Cross Module
Spring Washer M8
Hex Socket Head Bolt
- 7

C Clamp Kit
Item No.: MR-CC-T
Components: C Clamp
Cross Module
Spring Washer M8
Hex Socket Head Bolt
- 8

Wind Deflector
Item No.: MR-RM1-WD
Components: Flat Washer M8
Spring Washer M8
Hexagon Socket Head Bolt Kit M8*18
- 9

Mudsill
Item No.: MR-RM1-M
Specification: L1350,L2700
Material: AL6005-T5(Anodized)
- 10

Splice for Mudsill
Item No.: MR-RM1-SpM
Material: AL6005-T5(Anodized)

Installation Guide

- 1

Place Mudsills as indicated in solution drawings.
- 2

Fasten Front Supports and Back Supports on the Mudsills by C Clamp Kit.
- 3

Fasten Ballasted Trays.
- 4

Put ballasts on Ballasted Tray.
- 5

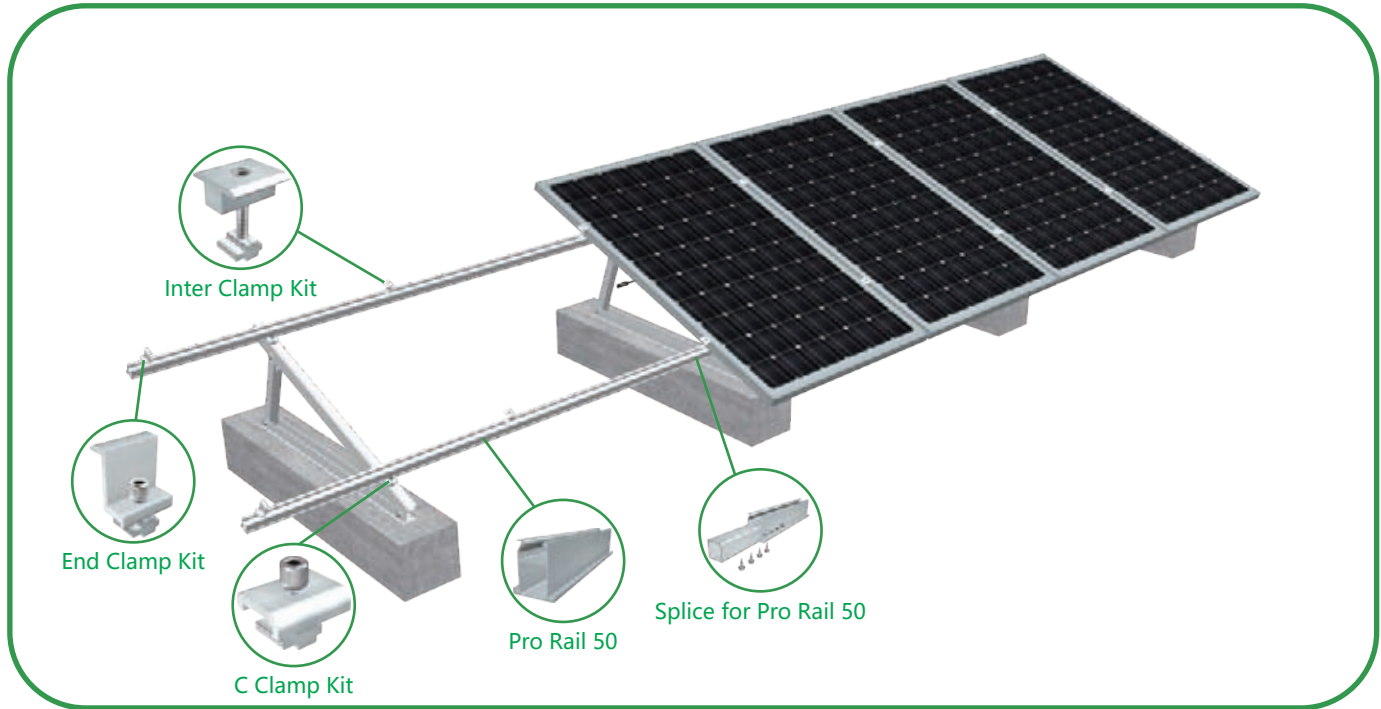
Fasten modules on the Front Supports and Back Supports.
- 6

Fasten modules by Inner Clamp Kits.
- 7

Complete installation.

MRac®

MRac Roof Solar PV Mounting System Matrix II



Technical Parameters

System Name	MRac RMII	Design Standard	AS/NZS 1170 , DIN 1055 , JIS C 8955 : 2017,
Installation Site	Flat Roof, Pitched Roof		International Building Code IBC 2009
Foundation	Concrete Roof, Metal Roof		California Building Code CBC 2010
Tilt Angle	0-60°	Material	AL6005-T5(Anodized)
Wind Load	60m/s	Fastener	SUS304 & Zinc-Nickel Alloy Electroplated Steel
Snow Load	1.6KN/m ²	Small Components	AL6005-T5(Anodized)
Applicable Solar Module	Framed or Frameless	Color	Silver or Customized
Panel Layout	Portrait or Landscape	Warranty	10-Year Warranty

Overview

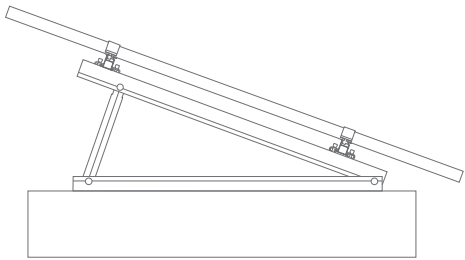
MRac Roof Solar PV Mounting System Matrix II is derived from RM I to meet different roof projects demands. Solar modules can be arranged with single or double rows of landscape or portrait orientation. Quick installation and stable structure are assured by the modular Patented design.



Advantages

- > **System Compatibility**
Components mostly pre-assembled in factory to assure quick and reliable installation on site. Suitable for different flat rooftop, and compatible to different types of solar modules.
- > **Unique Mudsill Design**
The mudsill can be fixed to flat roof or pitched roof with concrete foundation or steel foundation.
- > **Solar Module Layout Flexibility**
Both landscape and portrait solar module layout are suitable. Both single row and double rows layout can be achieved separately or combined.
- > **Adjustability**
Tilt angle can be adjustable

Structure



Component Details

- 1

Pro Rail 50
Item No.: MR-R-Pro50
Specification : 3100, 4100, 5100mm
Material : AL6005-T5(Anodized)
- 2

Splice for Pro Rail 50
Item No.: MR-SP-RPro50
Specification : standard length 260mm
Flange Head Self-tapping Screw ST6.3*19
Material : AL6005-T5(Anodized)
- 3

End Clamp Kit
Item No.: MR-EC-ST
Components: End Clamp
Cross Module
Spring Washer M8
Hex Socket Head Bolt
- 4

Inter Clamp Kit
Item No.: MR-IC-ST
Components: Inter Clamp
Cross Module
Spring Washer M8
Hex Socket Head Bolt
- 5

C Clamp Kit
Item No.: MR-CC-T
Components: C Clamp
Cross Module
Spring Washer M8
Hex Socket Head Bolt
- 6

Angle Aluminum Tripod Support
Item No.: MR-RM2-AAT
Components: Angle Aluminum Beam
Angle Aluminum Mudsill
Angle Aluminum Side Beam
flat washerM8
spring washerM8
Hexagon Bolt M8*2.5
- 7

Single Tripod Support
Item No.: MR-RM2-ST
Components: Tripod Support Beam
Tripod Support Mudsill
Tripod Support SquareTubeA
HJointer
Flat Washer M10
Spring Washer M10
Hexagon Bolt M10*65
- 8

Double Tripod Support
Item No.: MR-RM2-DT
Components: Tripod Support Beam
Tripod Support Mudsill
Tripod Support Square Tube A/B
H Jointer
Flat Washer M10
Spring Washer M10
Hexagon Bolt M10*65
- 9

Adjustable Tripod
Item No.: MR-RM2-AT
Components: Tripod Support Beam
Tripod Support Mudsill
Tripod Support Square Tube A
H Jointer
Flat Washer M10
Spring Washer M10
Hexagon Bolt M10*65

Installation Guide

- 1

Place the concrete base at the position indicated on the solution drawings.
- 2

Fasten the preassembled supports on the expansion bolts by C Clamps.
- 3

Install splices.
- 4

Fasten the rails by C Clamp Kits.
- 5

Install modules on the rails.
- 6

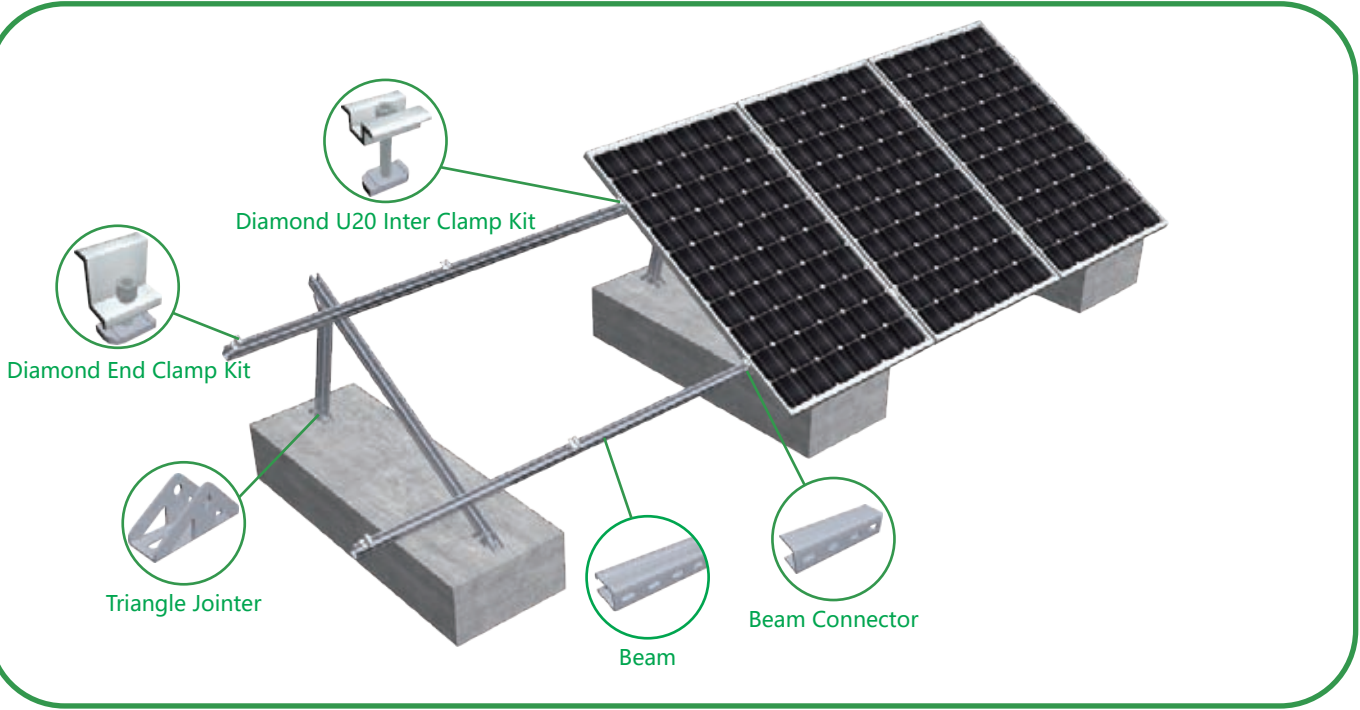
Fasten modules by Inner Clamp Kits.
- 7

Fasten modules by End Clamp Kits.
- 8

Complete installation.

MRac[®]

MRac Roof Solar PV Mounting System Matrix III



Technical Parameters

System Name	MRac RMIII	Design Standard	AS/NZS 1170 , DIN 1055 , JIS C 8955 : 2017,
Installation Site	Flat Roof, Open Land		International Building Code IBC 2009
Foundation	Concrete Foundation		California Building Code CBC 2010
Tilt Angle	0-60°	Material	Q235B(Hot-dip galvanized)
Wind Load	60m/s	Fastener	Zinc-Nickel Alloy Electroplated Steel & Q235B
Snow Load	1.6KN/M2	Small Components	AL6005-T5(Anodized)
Applicable Solar Module	Framed or Frameless	Color	Silver or Customized
Panel Layout	Portrait or Landscape	Warranty	10-Year Warranty

Overview

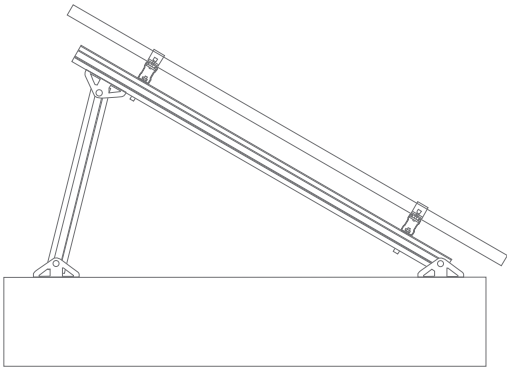
MRac Roof Solar PV Mounting System Matrix III is applied to various kinds of flat roof projects. Main components are made of hot-dip galvanized steel, with good performance of structure strength, stability and anti-corrosion, compatible with varied solar modules. Patented structure design guarantee quick installation to save construction cost.



Advantages

- > **System Compatibility**
Components mostly pre-assembled in factory to assure quick and reliable installation on site. Suitable for different flat rooftop, and compatible to different types of solar modules.
- > **Cost Efficiency**
Hot-dip galvanized steel assures the structure strength and lower cost for large-scale installation

Structure



Component Details

- 1

Beam

Item No.: MR-B-C62
Specification : 3100、4100、5100mm
Material : Q235B(Hot-dip galvanized)
- 2

Beam Connector

Item No.: MR-SP-BC
Specification : L200
Material : Q235B(Hot-dip galvanized)
- 3

Diamond End Clamp Kit

Item No.: MR-DEC-ST
Components: End Clamp
Rhombus Nut M8
Spring Washer M8
Hex Socket Head Bolt
- 4

Diamond U20 Inter Clamp Kit

Item No.: MR-DIC-U20
Components: Inter Clamp
Rhombus Nut M8
Spring Washer M8
Hex Socket Head Bolt
- 5

Inclined Support

Item No.: MR-SB-C62
Material : Q235B(Hot-dip galvanized)
- 6

Back Support

Item No.: MR-BS-C
Material : Q235B(Hot-dip galvanized)
- 7

Triangle Jointer

Item No.: MR-TJ-L50
Specification : L150
Material : Q235B(Hot-dip galvanized)

Installation Guide

- 1

Make concrete bases with embedded bolts according to the solution drawing.
- 2

Fasten the plate on the concrete base.
- 3

Connect Back Support,Front Support and Inclined Support with the base.
- 4

Front&Back Support and Inclined Support installation has been completed.
- 5

Fasten the rail on Inclined Support.
- 6

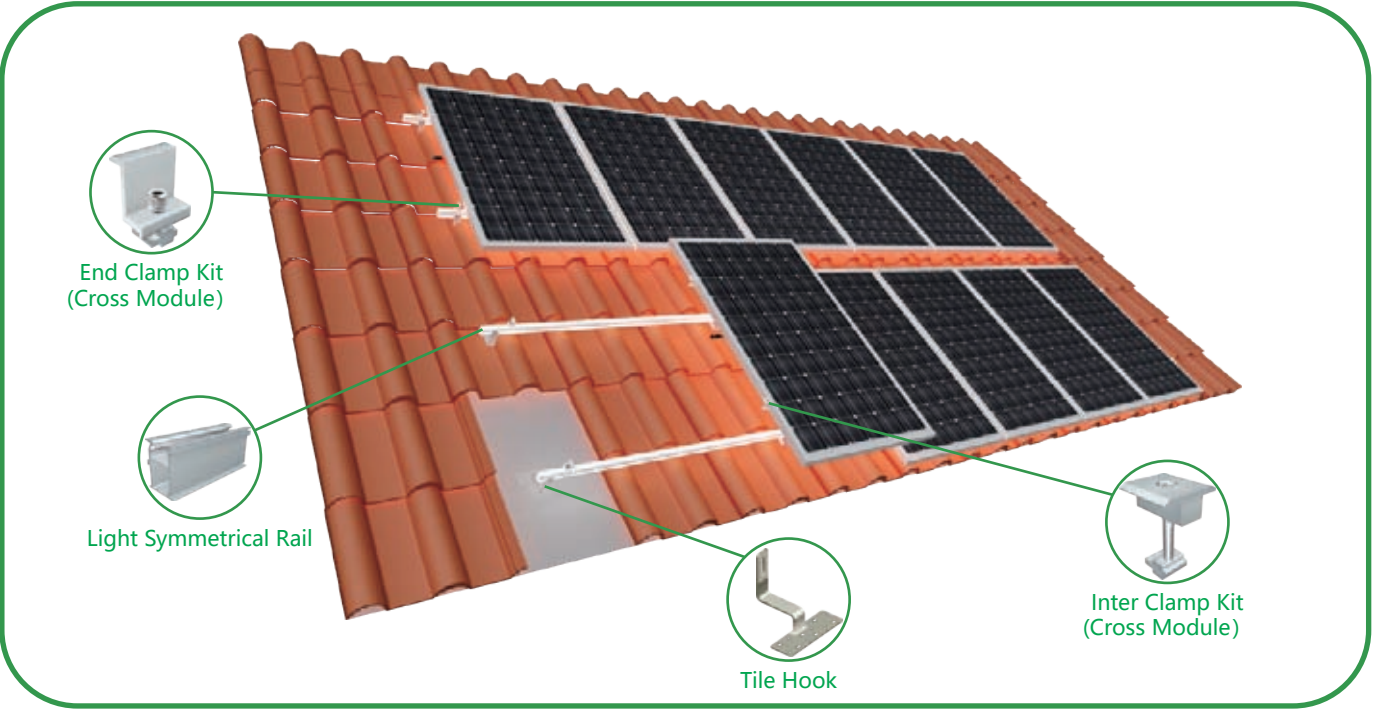
Install the Beam Connector.
- 7

Beam installation finished.
- 8

Fasten the solar modules by end clamp kits and inner clamp kits.
- Complete installation.

MRac[®]

MRac Tile Roof Hook Solar PV Mounting System



Technical Parameters

System Name	MRac Tile Hook	Design Standard	AS/NZS 1170、DIN 1055、JIS C8955：2017
Installation Site	Pitched Roof		International Building Code：IBC 2009
Foundation	Tile, Flat Tile, Slate Tile, Asphalt Shingle Tile		California Building Code：CBC 2010
Tilt Angle	5-45°	Hook Material	AL6005-T5(Anodized)
Wind Load	60m/s	Fastener	SUS304 & Zinc-Nickel Alloy Electroplated Steel
Snow Load	1.6KN/m ²	Small Components	AL6005-T5(Anodized)
Applicable Solar Module	Framed or Frameless	Color	Silver or Customized Color
Panel Layout	Portrait or Landscape	Warranty	10-year warranty

Overview

MRac Tile Roof Hook Solar PV Mounting System is applied to tile roof residential and commercial solar projects. The system can achieve stable and strong connection between the roof support structure and solar modules with modular Patented design. Pre-assembled kits save the installation time and cost onsite.

Components



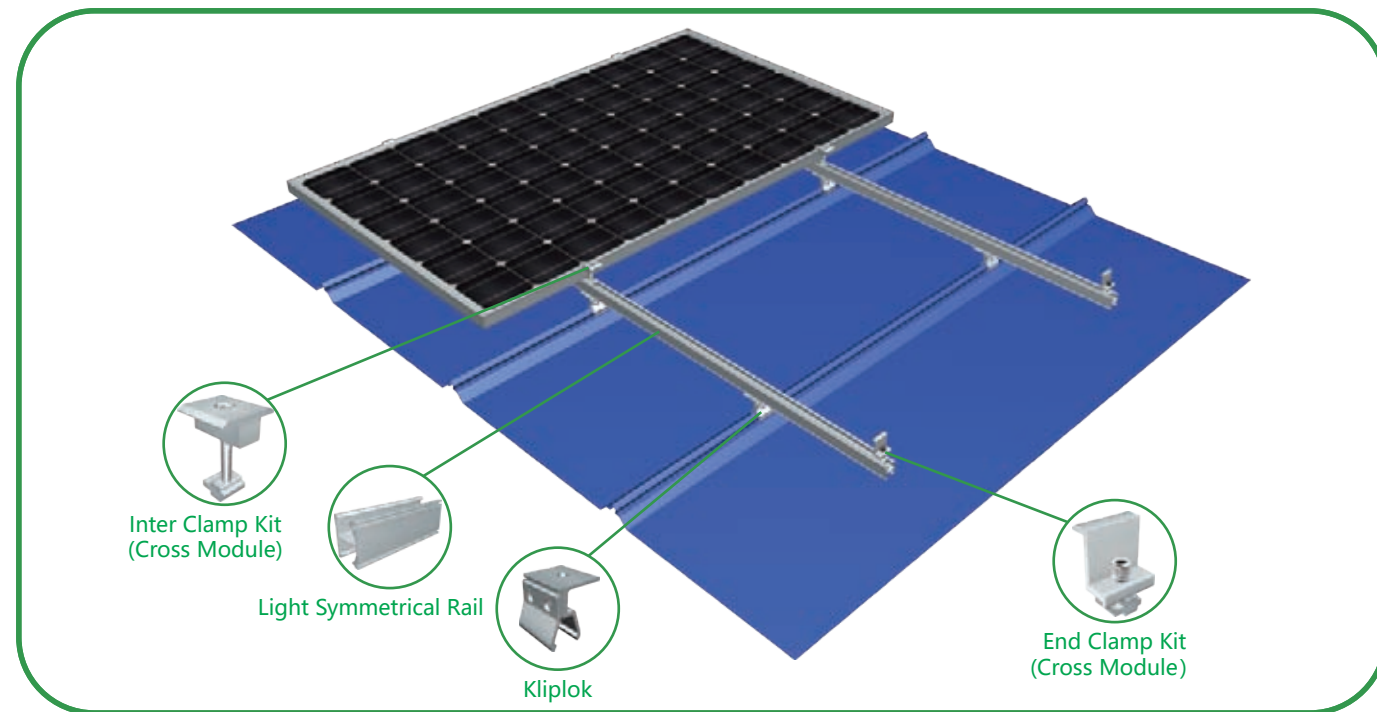
Optional Hook Type



Accessories Available



MRac® | **MRac Kliplok**



Technical Parameters

System Name	MRac Kliplok	Design Standard	AS/NZS 1170, DIN 1055, JIS C8955: 2017,
Installation Site	Pitched Roof		International Building Code IBC 2009,
Foundation	Trapezoidal Metal Roof Support		California Building Code CBC 2010;
Tilt Angle	0-15°	Material	AL6005-T5(Anodized)
Wind Load	60m/s	Fastener	SUS304 & Zinc-Nickel Alloy Electroplated Steel
Snow Load	1.6KN/m²	Small Components	AL6005-T5(Anodized)
Applicable Solar Module	Framed or Frameless	Color	Silver or Customized
Panel Layout	Portrait or Landscape	Warranty	10 Years

Overview

MRac Kliplok is mainly applied to Kliplok, and its material is Al6005-T5. With its professional design, it can realize the perfect connection between roof support and roof to meet customer installation requirement. Professional solution and structure design can save your installation time and cost. Moreover, Patented and unique design can bring you a good installation experience.

Components

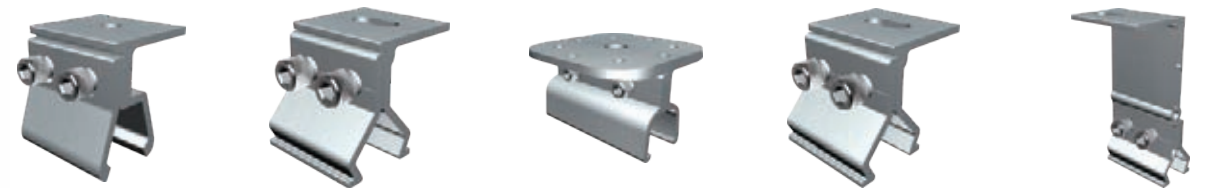


Item No.:MR-VI-AF28 Kliplok 28	Item No.:MR-EC-ST End Clamp Kit	Item No.:MR-IC-U20 U20 Inter Clamp Kit	Item No.:MR-R-Lsym/L Light Symmetrical Rail
-----------------------------------	------------------------------------	---	--

Applicable Kliplok Support



Item No.:MR-VI-AF18 Item No.:MR-VI-AF22 Item No.:MR-VI-AF23 Item No.:MR-VI-AF25 Item No.:MR-VI-AF27
 Kliplok 18 Kliplok 22 Kliplok 23 Kliplok 25 Kliplok 27



Item No.:MR-VI-AF28	Item No.:MR-VI-AF29	Item No.:MR-VI-AF406/700	Item No.:MR-VI-AF3	Item No.:MR-VI-AF3(YG)
Kliplok 28	Kliplok 29	Kliplok 406/700	Kliplok III	Kliplok III(YG)



Item No.:MR-VI-AF700 Kliplok 700	Item No.:MR-VI-MK Multifunctional	Item No.:MR-VI-MK5 Multifunctional V	Item No.:MR-VI-MK6 Multifunctional VI	Item No.:MR-VI-FKC3 Vertical Klip-lok Clamp III
-------------------------------------	--------------------------------------	---	--	--

Accessories Available



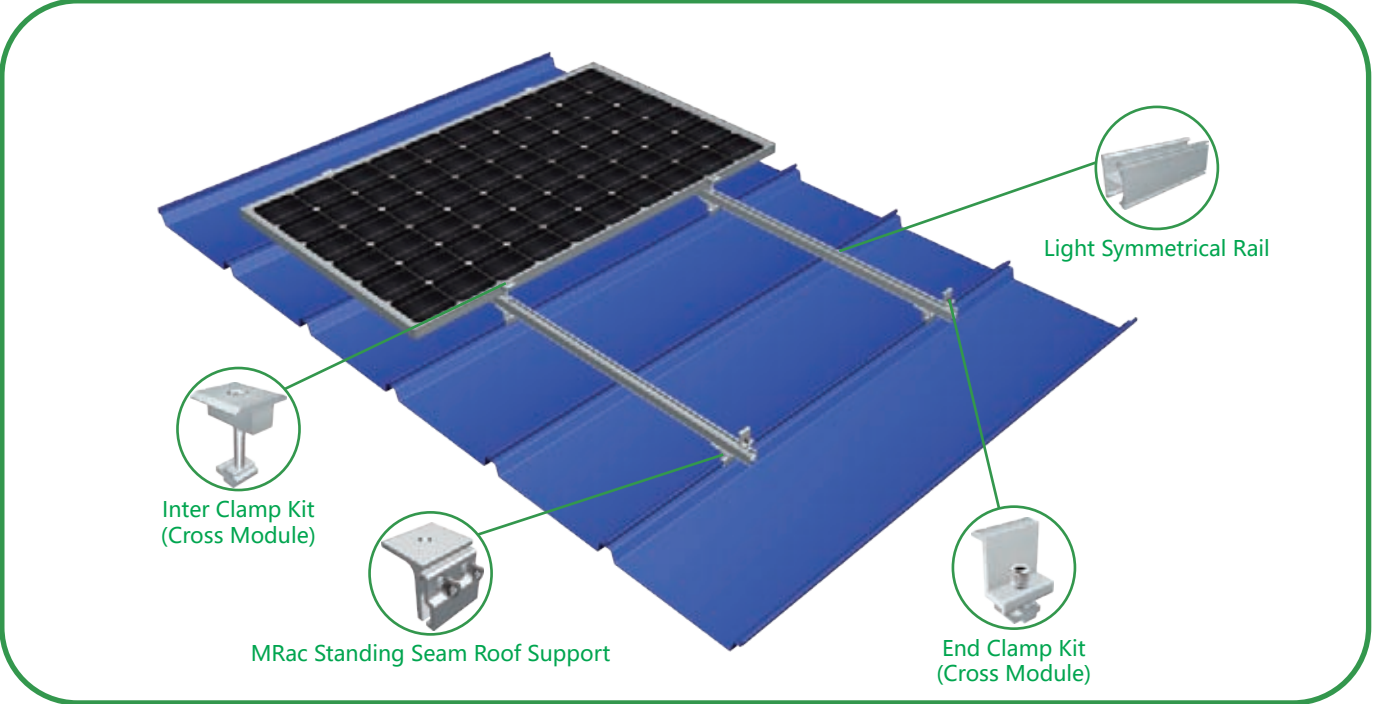
Item No.:MR-R-MA	Item No.:MR-R-T/H45	Item No.:MR-R-DC/H50	Item No.:MR-R-DC/H40	Item No.:MR-R-Lsym/L	Item No.:MR-R-Sym/H39	Item No.:MR-R-ProS/L
MA Rail	T-slot Rail H45	DC Rail H50	DC Rail H40	Light Symmetrical Rail	Symmetric Rail H39	Pro Standard Rail



Item No.:MR-CC-Sym	Item No.:MR-EC-Sym	Item No.:MR-IC-Sym	Item No.:MR-EC-DC	Item No.:MR-IC-DC	Item No.:MR-EC-MA	Item No.:MR-IC-MA	Item No.:MR-EC-T	Item No.:MR-IC-T
C Clamp Kit (Sym)	End Clamp Kit (Sym)	Inter Clamp Kit (Sym)	End Clamp Kit (DC)	Inter Clamp Kit(DC)	End Clamp Kit(MA)	Inter Clamp Kit(MA)	End Clamp Kit(T)	Inter Clamp Kit(T)

MRac[®]

MRac Standing Seam Metal Roof Solar PV Mounting System



Technical Parameters			
System Name	MRac Standing Seam Roof Support	Design Standard	AS/NZS 1170、DIN 1055、JIS C8955: 2017
Installation Site	Pitched Roof		International Building Code: IBC 2009
Foundation	Trapezoidal Metal Roof Support		California Building Code: CBC 2010
Tilt Angle	0-15°	Material	AL6005-T5(Anodized)
Wind Load	60m/s	Fastener	Q235B(Hot-Dip Galvanized) & Al6005-T5(Anodized)
Snow Load	1.6KN/m ²	Small Components	AL6005-T5(Anodized)
Applicable Solar Module	Framed or Frameless	Color	Silver or Customized
Panel Layout	Portrait or Landscape	Warranty	10 Years

Overview

MRac Standing Seam Metal Roof Solar PV Mounting System is applied to Standing Seam Metal Sheet Roof commercial and industrial solar projects. The system can achieve stable and strong connection between the roof support structure and solar modules with modular Patented design. Pre-assembled kits save the installation time and cost onsite.

Item No.:MR-VI-S8
MRac Standing Seam Roof Support

Item No.:MR-EC-ST
End Clamp Kit

Item No.:MR-IC-U20
U20 Inter Clamp Kit

Item No.:MR-R-Lsym/L
Light Symmetrical Rail

Tile's Structure

Applicable Standing Seam Support

Item No.:MR-VI-S8
Standing Seam 8

Item No.:MR-VI-S9
Standing Seam 9

Item No.:MR-VI-S10
Standing Seam 10

Item No.:MR-VI-S11
Standing Seam 11

Item No.:MR-VI-S13
Standing Seam 13

Item No.:MR-VI-S14
Standing Seam 14

Item No.:MR-VI-S15
Standing Seam 15

Item No.:MR-VI-S20
Standing Seam 20

Item No.:MR-VI-S22V
Standing Seam 22

Item No.:MR-VI-SC
Seppan Clip

Item No.:MR-VI-SSMC/L
Standing Seam Multi Clamp Kit L

Item No.:MR-VI-FSSC11
Facade Standing Seam Clamp Kit 11

Item No.:MR-VI-SSS13
Standing Seam Support 13

Item No.:MR-VI-
Standing Multifunctional Support

Accessories Available

Item No.:MR-R-MA
MA Rail

Item No.:MR-R-T/H45
T-slot Rail H45

Item No.:MR-R-DC/H50
DC Rail H50

Item No.:MR-R-DC/H40
DC Rail H40

Item No.:MR-R-Lsym/L
Light Symmetrical Rail

Item No.:MR-R-Sym/H39
Symmetric Rail H39

Item No.:MR-R-ProS/L
Pro Standard Rail

Item No.:MR-CC-Sym
C Clamp Kit (Sym)

Item No.:MR-EC-Sym
End Clamp Kit (Sym)

Item No.:MR-IC-Sym
Inter Clamp Kit (Sym)

Item No.:MR-EC-DC
End Clamp Kit (DC)

Item No.:MR-IC-DC
Inter Clamp Kit (DC)

Item No.:MR-EC-MA
End Clamp Kit (MA)

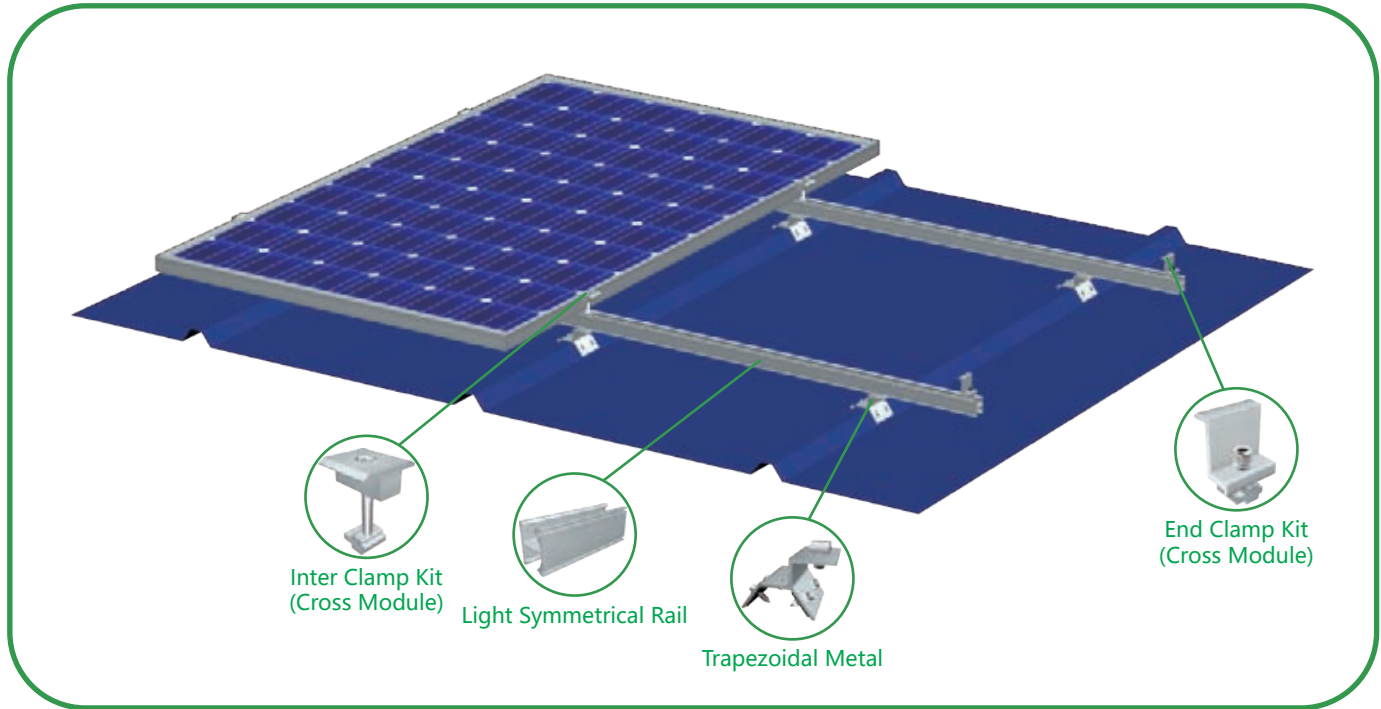
Item No.:MR-IC-MA
Inter Clamp Kit (MA)

Item No.:MR-EC-T
End Clamp Kit (T)

Item No.:MR-IC-T
Inter Clamp Kit (T)

MRac[®]

Trapezoidal Metal



Technical Parameters

System Name	MRac Trapezoidal Metal	Design Standard	AS/NZS 1170, DIN 1055, JIS C8955: 2017,
Installation Site	Pitched Roof		International Building Code IBC 2009,
Foundation	Trapezoidal Metal Roof Support		California Building Code CBC 2010;
Tilt Angle	0-15°	Material	AL6005-T5(Anodized)
Wind Load	60m/s	Fastener	SUS304&Zinc-Nickel Alloy Electroplated Steel
Snow Load	1.6KN/m ²	Small Components	AL6005-T5(Anodized)
Applicable Solar Module	Framed or Frameless	Color	Silver or Customized
Panel Layout	Portrait or Landscape	Warranty	10-Year Warranty

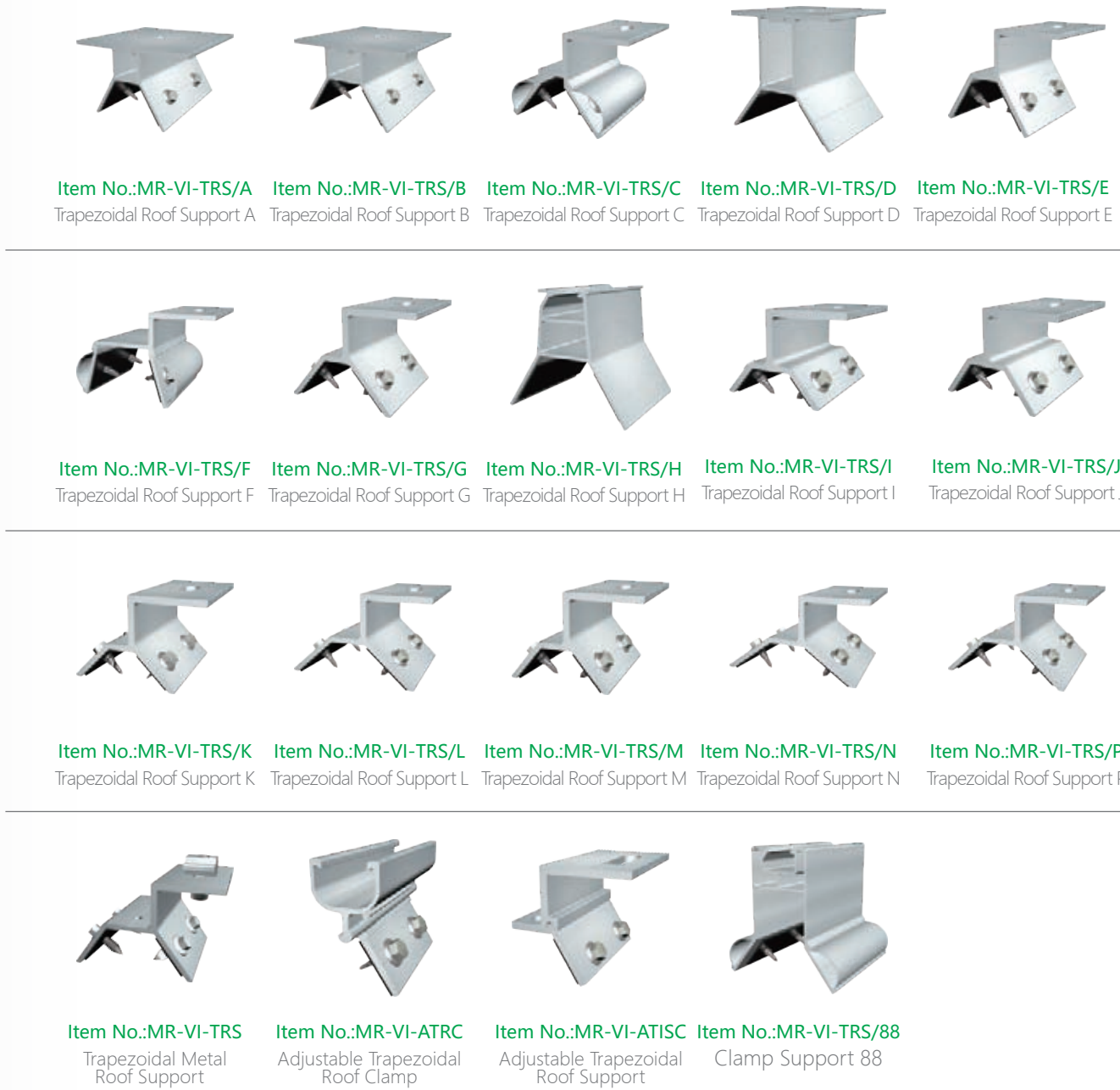
Overview

MRac Trapezoidal Metal Roof Clamp Solar PV Mounting System is mainly applied to metal roof, and its main material is aluminium alloy. With its professional design, it can realize the perfect connection between kiploks and roof to meet customer installation requirement. Professional solution and structure design can save your installation time and cost. Moreover, Patented and unique design can bring you a good and fast installation experience.

Components



Applicable Trapezoidal Metal Support

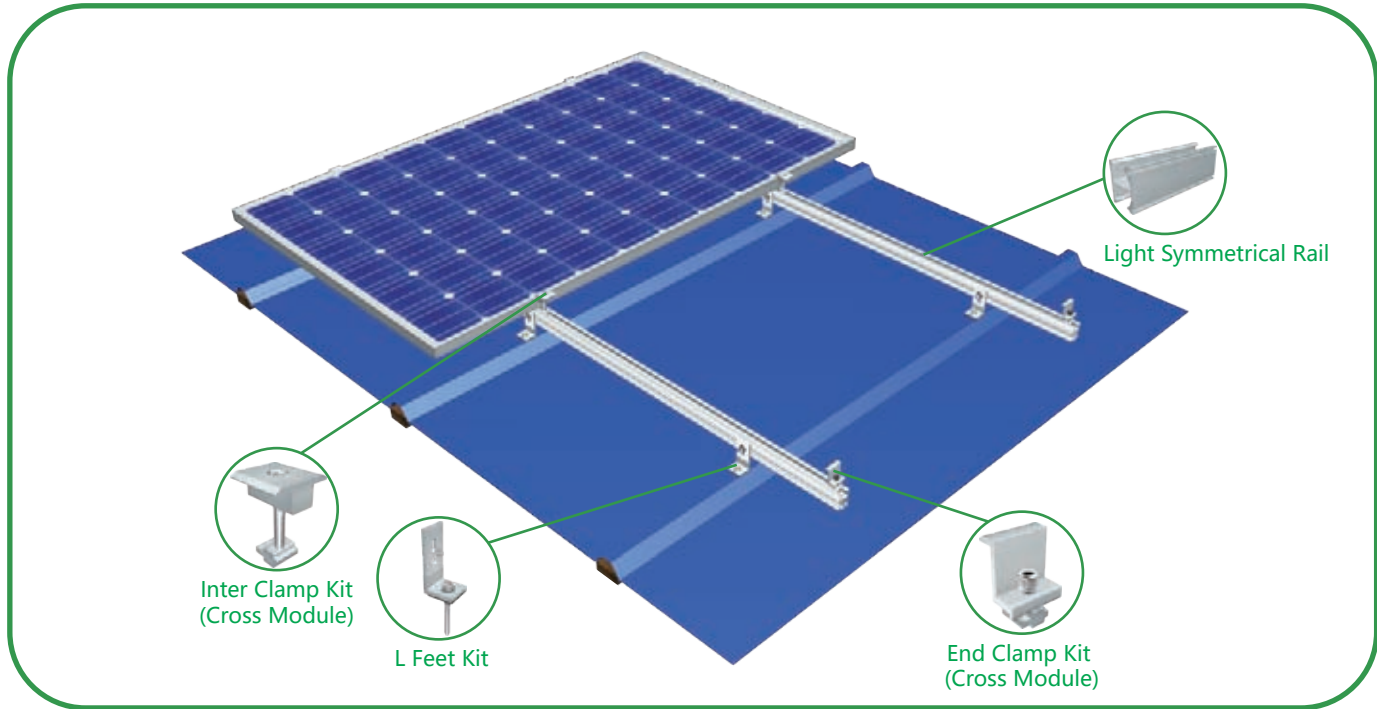


Accessories Available



MRac[®]

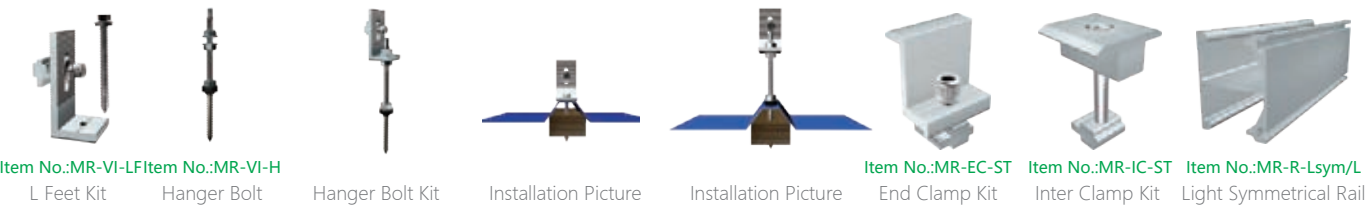
MRac L Feet and Hanger Bolt Kit Metal Roof PV Mounting System



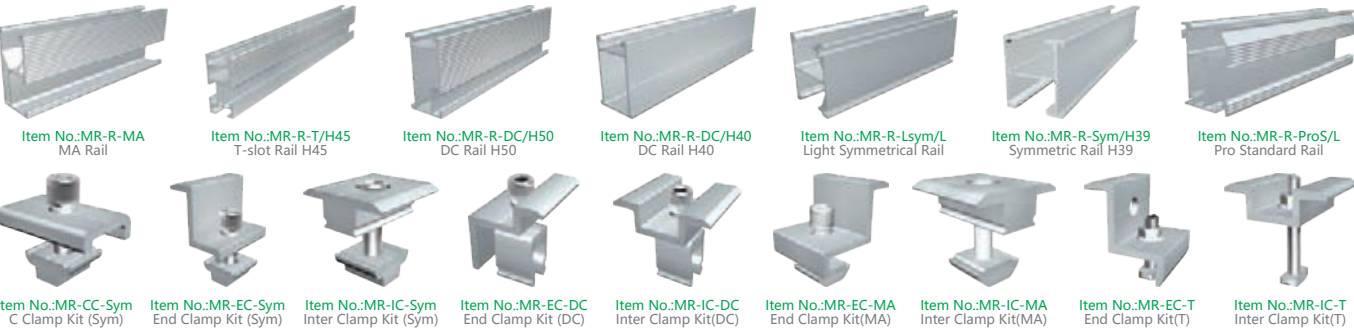
Technical Parameters

System Name	MRac L Feet Kit & Hanger Bolt Kit	Design Standard	AS/NZS 1170, DIN 1055, JIS C8955: 2017
Installation Site	Pitched Roof		International Building Code: IBC 2009
Foundation	Trapezoidal Roof		California Building Code: CBC 2010
Tilt Angle	0°	Material	AL6005-T5(Anodized)
Wind Load	60m/s	Fastener	SUS304 & Zinc-Nickel Alloy Electroplated Steel
Snow Load	1.6KN/m ²	Small Components	AL6005-T5(Anodized)
Applicable Solar Module	Framed or Frameless	Color	Silver or Customized
Panel Layout	Portrait or Landscape	Warranty	10-Year Warranty

Components

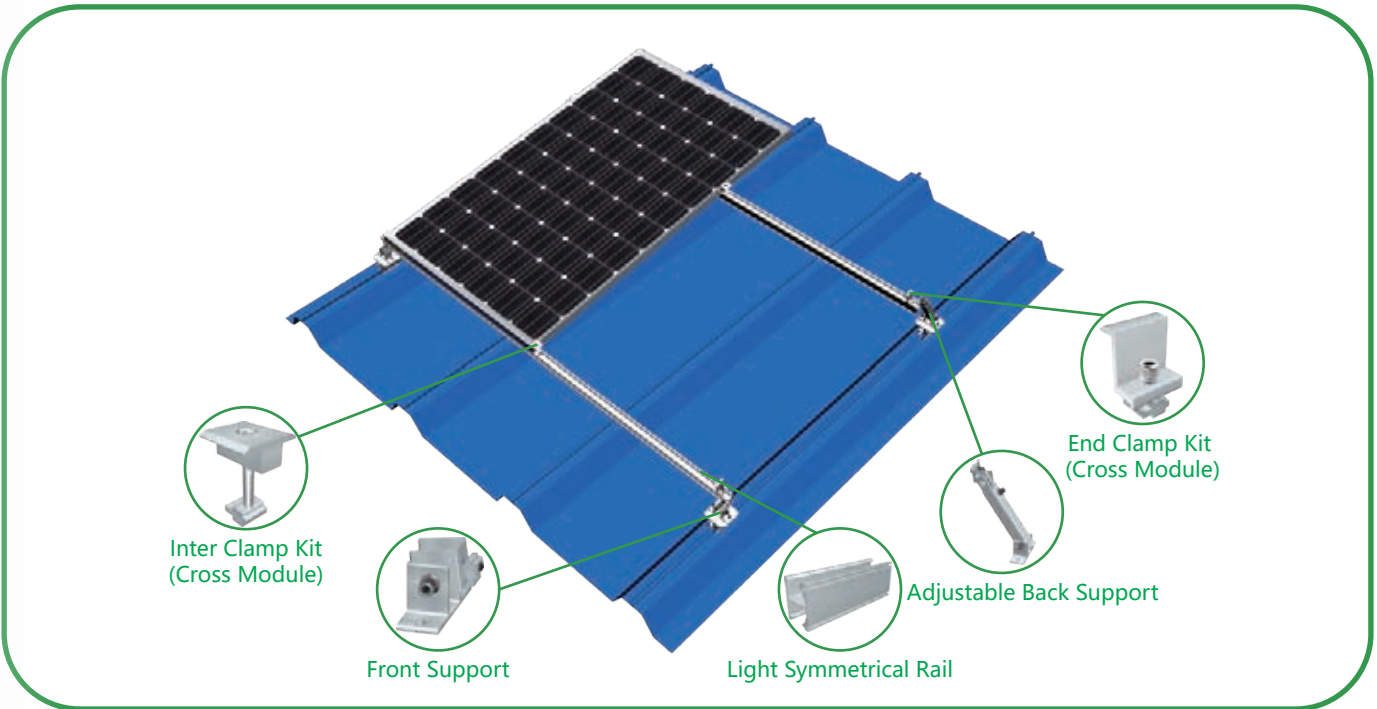


Accessories Available



MRac[®]

MRac Adjustable Support Kit Solar PV Mounting System



Technical Parameters

System Name	Adjustable Support	Design Standard	AS/NZS 1170, DIN 1055, JIS C8955: 2017
Installation Site	Pitched Roof		International Building Code: IBC 2009
Foundation	Metal Roof		California Building Code: CBC 2010
Tilt Angle	10-60°	Material	AL6005-T5(Anodized)
Wind Load	60m/s	Fastener	SUS304 & Zinc-Nickel Alloy Electroplated Steel
Snow Load	1.6KN/m ²	Small Components	AL6005-T5(Anodized)
Applicable Solar Module	Framed or Frameless	Color	Silver or Customized
Panel Layout	Landscape or Portrait	Warranty	10-Year Warranty

Components

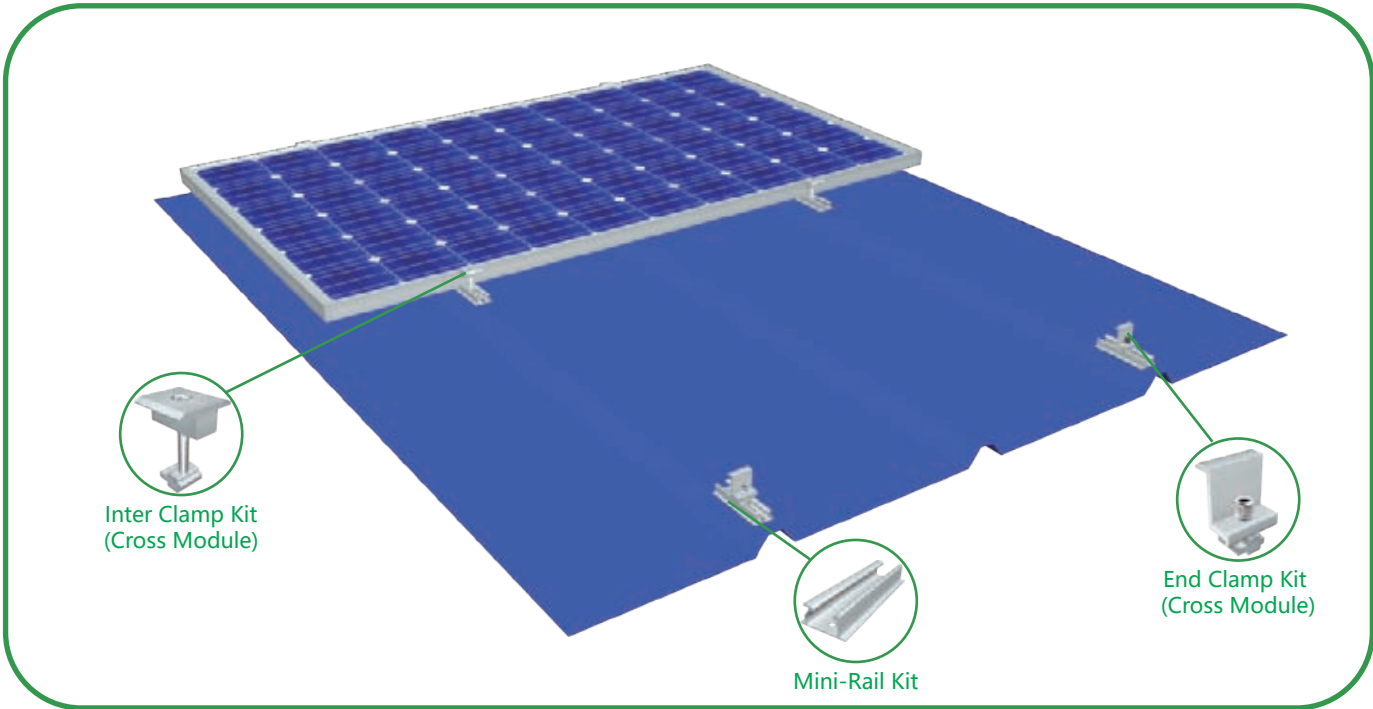


Accessories Available



MRac[®]

MRac Mini-Rail Kit Metal Roof PV Mounting System



Technical Parameters

System Name	Mini-Rail Kit	Design Standard	AS/NZS 1170、DIN 1055、JIS C8955：2017
Installation Site	Pitched Roof		International Building Code：IBC 2009
Foundation	Trapezoidal Roof		California Building Code：CBC 2010
Tilt Angle	0°	Material	Q235B(Hot-Dip Galvanized) &AL6005-T5(Anodized)
Wind Load	60m/s	Fastener	SUS304 & Zinc-Nickel Alloy Electroplated Steel
Snow Load	1.6KN/m ²	Small Components	AL6005-T5(Anodized)
Applicable Solar Module	Framed or Frameless	Color	Silver or Customized
Panel Layout	Portrait or Landscape	Warranty	10-Year Warranty

Overview

MRac Mini-Rail Kit is mainly applied to Trapezoidal Metal Roof in commercial and industrial solar projects. The system can achieve stable and strong connection between the roof support structure and solar modules with modular Patented design. Pre-assembled kits save the installation time and cost onsite.

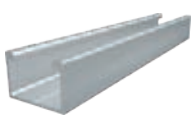
Components



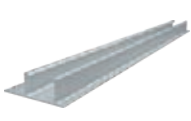
Types of Support Available



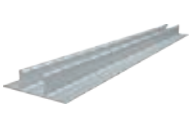
Item No.:MR-VI-TI
Mini-Rail Kit



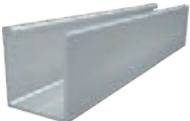
Item No.:MR-VI-H18.5A/MA
MA Mini Rail H18.5



Item No.:MR-VI-H18.5B/MA
MA Mini Rail H18.5B



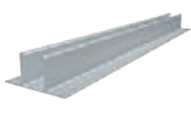
Item No.:MR-VI-H18.5C/MA
MA Mini Rail H18.5C



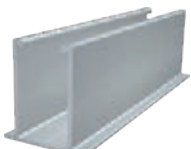
Item No.:MR-VI-H30A/MA
MA Mini Rail H30A



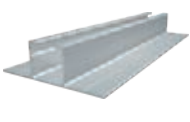
Item No.:MR-VI-H30B/MA
MA Mini Rail H30B



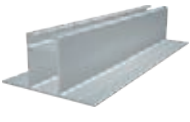
Item No.:MR-VI-H30C/MA
MA Mini Rail H30C



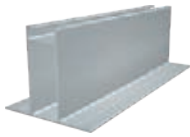
Item No.:MR-VI-H45/MA
MA Mini Rail H45



Item No.:MR-VI-H18.5/T
T Rail H18.5

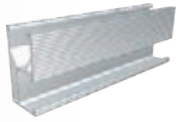


Item No.:MR-VI-H30/T
T Rail H30



Item No.:MR-VI-H50/T
T Rail H50

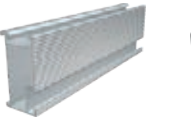
Accessories Available



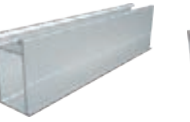
Item No.:MR-R-MA
MA Rail



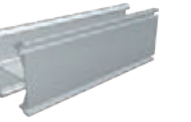
Item No.:MR-R-T/H45
T-slot Rail H45



Item No.:MR-R-DC/H50
DC Rail H50



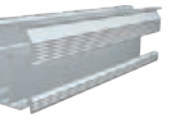
Item No.:MR-R-DC/H40
DC Rail H40



Item No.:MR-R-Lsym/L
Light Symmetrical Rail



Item No.:MR-R-Sym/H39
Symmetric Rail H39



Item No.:MR-R-ProS/L
Pro Standard Rail



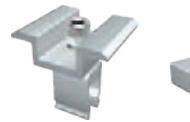
Item No.:MR-CC-Sym
C Clamp Kit (Sym)



Item No.:MR-EC-Sym
End Clamp Kit (Sym)



Item No.:MR-IC-Sym
Inter Clamp Kit (Sym)



Item No.:MR-EC-DC
End Clamp Kit (DC)



Item No.:MR-IC-DC
Inter Clamp Kit (DC)



Item No.:MR-EC-MA
End Clamp Kit (MA)



Item No.:MR-IC-MA
Inter Clamp Kit (MA)



Item No.:MR-EC-T
End Clamp Kit (T)

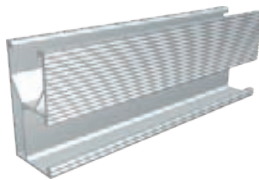


Item No.:MR-IC-T
Inter Clamp Kit (T)

MRac[®]

Accessories for MA Series

MA Rail



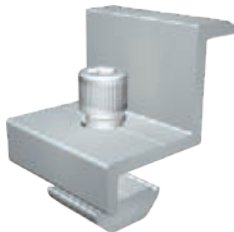
Product Name	MA Rail
Item No.	MR-R-MA
Standard Length	2100mm, 4200mm, Customized
Material	AL6005-T5(Anodized)

Splice kit for MA Rail

Product Name	Splice kit for MA Rail
Item No.	MR-SP-MA
Standard Length	L100
Material	AL6005-T5(Anodized)



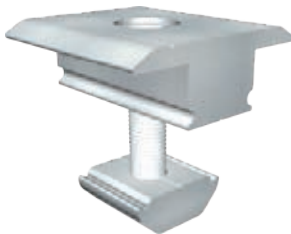
End clamp kit(MA)



Product Name	End clamp kit(MA)
Item No.	MR-EC-MA
Specification	L30;L32;L35;L38;L40;L42;L45;L50
Material	AL6005-T5(Anodized)/SUS304

Inter clamp kit(MA)

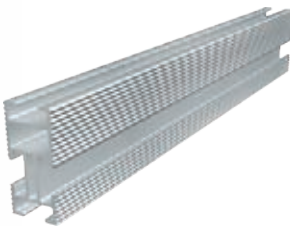
Product Name	Inter clamp kit(MA)
Item No.	MR-IC-MA
Specification	L35;L40;L45;L50
Material	AL6005-T5(Anodized)/SUS304



MRac[®]

Accessories for T Slot

T-slot Rail H45



Product Name	T-slot Rail H45
Item No.	MR-R-T/H45
Standard Length	2100mm, 4200mm, Customized
Material	AL6005-T5(Anodized)

Splice for T-slot Rail H45 Kit

Product Name	Splice for T-slot Rail H45 Kit
Item No.	MR-SP-T/H45
Standard Length	L100
Material	AL6005-T5(Anodized)



End Clamp Kit(T)



Product Name	End Clamp Kit(T)
Item No.	MR-EC-T
Specification	L30;L32;L35;L38;L40;L42;L45;L50
Material	AL6005-T5(Anodized)/SUS304

Inter Clamp Kit(T)

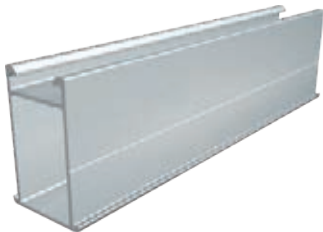
Product Name	Inter Clamp Kit(T)
Item No.	MR-IC-T
Specification	L35;L40;L45;L50
Material	AL6005-T5(Anodized)/SUS304





Accessories for DC Series

DC Rail H40



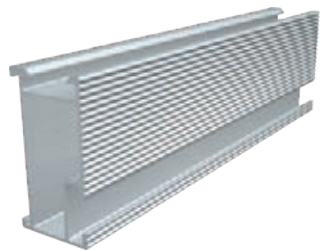
Product Name	DC Rail H40
Item No.	MR-R-DC/H40
Standard Length	2100mm, 4200mm, Customized
Material	AL6005-T5(Anodized)

Splice for DC Rail H40

Product Name	Splice for DC Rail H40
Item No.	MR-SP-DC/H40
Standard Length	L100
Material	AL6005-T5(Anodized)



DC Rail H50



Product Name	DC Rail H50
Item No.	MR-R-DC/H50
Standard Length	2100mm, 4200mm, Customized
Material	AL6005-T5(Anodized)

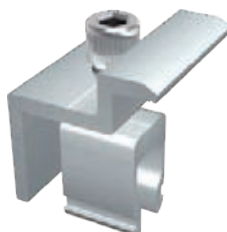
Splice for DC Rail H50

Product Name	Splice for DC Rail H50
Item No.	MR-SP-DC/H50
Specification	L100
Material	AL6005-T5(Anodized)



Accessories for DC Series

End Clamp Kit (DC)



Product Name	End Clamp Kit (DC)
Item No.	MR-EC-DC
Specification	L32;L35;L38;L40;L42;L45
Material	AL6005-T5(Anodized)/SUS304

Inter Clamp Kit(DC)

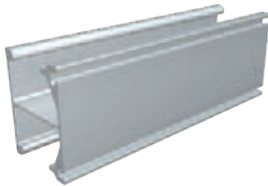
Product Name	Inter Clamp Kit(DC)
Item No.	MR-IC-DC
Specification	L35;L40;L45;L50
Material	AL6005-T5(Anodized)/SUS304





Universal Accessories

Light Symmetrical Rail



Product Name	Light Symmetrical Rail
Item No.	MR-R-Lsym/L
Standard Length	2100mm, 4200mm, Customized
Material	AL6005-T5(Anodized)

Splice for Light Symmetrical Rail

Product Name	Splice for Light Symmetrical Rail
Item No.	MR-SP-LSym
Specification	L100
Material	AL6005-T5(Anodized)



Pro Standard Rail



Product Name	Pro Standard Rail
Item No.	MR-R-ProS/L
Standard Length	2100mm, 4200mm, Customized
Material	AL6005-T5(Anodized)

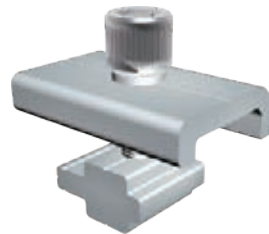
Splice for Pro Standard Rail and Hook Rail

Product Name	Splice for Pro Standard Rail and Hook Rail
Item No.	MR-SP-Pro
Specification	L100
Material	AL6005-T5(Anodized)



Universal Accessories

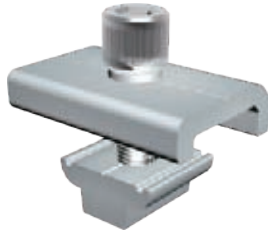
C Clamp Kit(Cross Module)



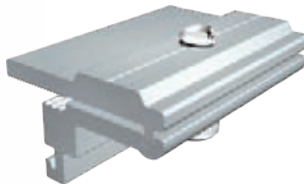
Product Name	C Clamp Kit(Cross Module)
Item No.	MR-CC-ST
Specification	L40; L80; L120; L150
Material	AL6005-T5(Anodized)/SUS304

C Clamp Kit(Symmetric Module)

Product Name	C Clamp Kit(Symmetric Module)
Item No.	MR-CC-Sym
Specification	L40; L80; L120; L150
Material	AL6005-T5(Anodized)/SUS304



Clamps Under Module_Landscape



Product Name	Clamps Under Module_Landscape
Item No.	MR-DM-C
Specification	L45
Material	AL6005-T5(Anodized)/SUS304

Clamps Under Module_Portrait

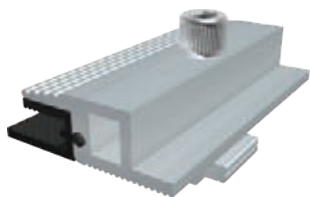
Product Name	Clamps Under Module_Portrait
Item No.	MR-DM-V
Specification	L45
Material	AL6005-T5(Anodized)/SUS304



MRac[®]

Universal Accessories

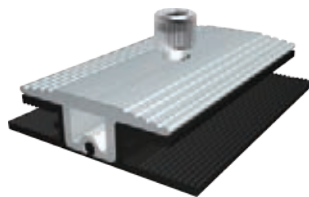
End Clamp Kit for Frameless Modules



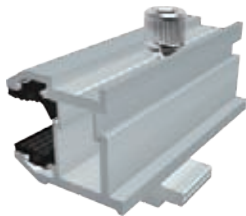
Product Name	End Clamp Kit for Frameless Modules
Item No.	MR-EC-TFM
Specification	L45
Material	AL6005-T5(Anodized)/SUS304

Inter Clamp Kit for Frameless Modules

Product Name	Inter Clamp Kit for Frameless Modules
Item No.	MR-IC-TFM
Specification	L45
Material	AL6005-T5(Anodized)/SUS304



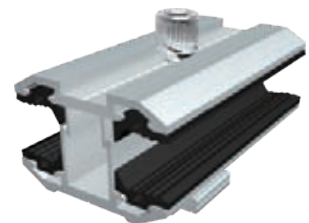
Adjustable End Clamp Kit for Frameless Modules



Product Name	Adjustable End Clamp Kit for Frameless Modules
Item No.	MR-EC-ATFM
Specification	L45
Material	AL6005-T5(Anodized)/SUS304

Adjustable Inter Clamp Kit for Frameless Modules

Product Name	Adjustable Inter Clamp Kit for Frameless Modules
Item No.	MR-IC-ATFM
Specification	L45
Material	AL6005-T5(Anodized)/SUS304



MRac[®]

System Accessories

Grounding Strap



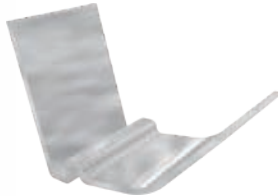
Product Name	Grounding Strap
Item No.	MR-GS-01
Specification	L30
Material	SUS304

Grounding Clip

Product Name	Grounding Clip
Item No.	MR-GL-01
Specification	L25
Material	SUS304



Cable Clamp



Product Name	Cable Clamp
Item No.	MR-CT-01
Specification	
Material	SUS304

Cable Clip

Product Name	Cable Clip
Item No.	MR-CT-02
Specification	
Material	



MRac[®]

System Accessories

Clip



Product Name	Clip
Item No.	MR-CC-01
Specification	
Material	SUS304

Clip II

Product Name	Clip II
Item No.	MR-CC-02
Specification	
Material	SUS304



MC4 Connector



Product Name	MC4 Connector
Item No.	MR-C-MC4
Specification	
Material	PV/PB, Copper, Tin Coated

Cable

Product Name	Cable
Item No.	MR-CI-01
Specification	Customized
Material	

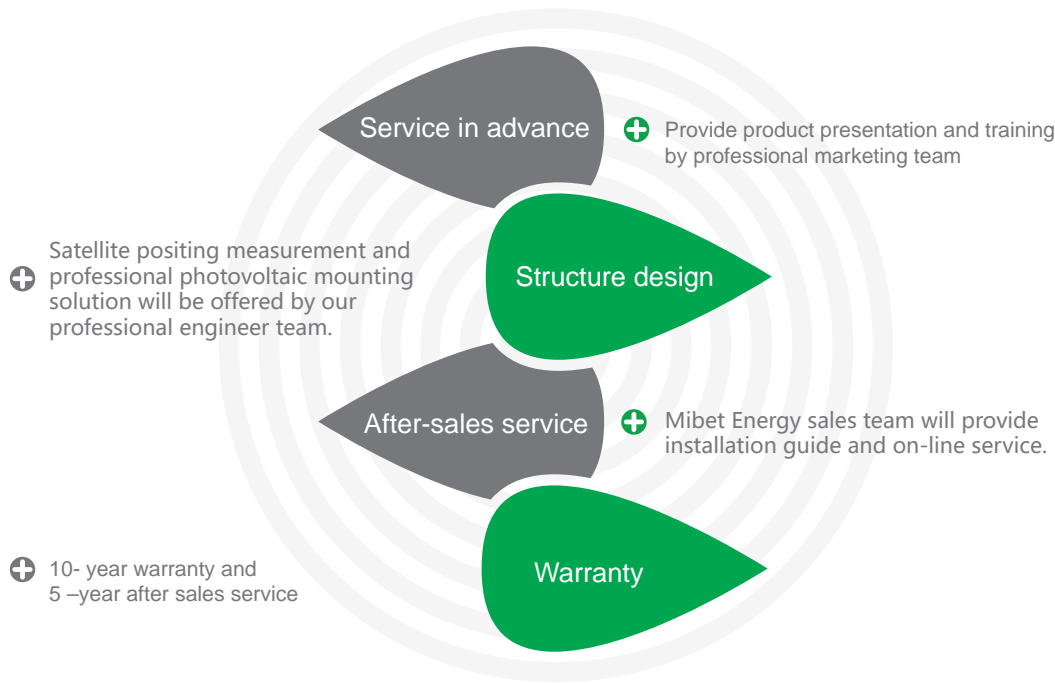


Declaration of 10-year Warranty



- Xiamen Mibet New Energy Co., Ltd. (hereinafter as “Mibet Energy”) warrants to the original purchaser (“Purchaser”) of product(s) that it manufactures (“Product”) at the original installation site that the Product shall be free from defects in material and workmanship for a period of ten (10) years, except for the anodized finish which shall be free from visible peeling, or cracking or chalking under normal atmospheric conditions.
- The after-sales service will not cover any man-made damage or any damage caused by the environment which is corrosive to solar mounting. Please read through the Cleaning and Maintenance Guide for Architecturally Finished Aluminum AAMA 609&610-02(please refer to www.aamanet.org). Mibet energy solemnly promises to offer after-sales services for damages, which is not made by men, during transport, storage, and installation.
- Mibet Energy will not be responsible for any damage during the installation caused by non-compliance with the installation guide, by any alteration, rework and modification unauthorized by Mibet Energy, or by any design defect of drawings provided by the customer
- Please ask the relevant suppliers for warranty declaration for other devices in solar system, e.g. solar modules and flashing.Mibet Energy is only responsible for solar mounting systems.

Support and Service



Notes

- For more information, call us or check on Mibet website
- The picture is only for reference, all right reserved by Xiamen Mibet New Energy Co.,Ltd.