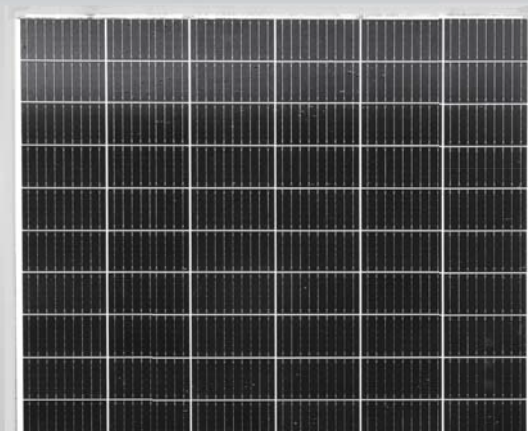


# Tiger LM 355-375 Watt

MONO PERC HALF CELL MODULE

Positive power tolerance of 0~+3%

- Half Cell
- Mono PERC 60 Cell



## KEY FEATURES



### 9 Busbar Solar Cell

9 busbar solar cell adopts new technology to improve the efficiency of modules, offers a better aesthetic appearance, making it perfect for rooftop installation.



### High Efficiency

Higher module conversion efficiency (up to 20.55%) benefit from half cell structure (low resistance characteristic).



### PID Resistance

Excellent Anti-PID performance guarantee limited power degradation for mass production.



### Low-light Performance

Advanced glass and cell surface textured design ensure excellent performance in low-light environment.



### Severe Weather Resilience

Certified to withstand: wind load (2400 Pascal) and snow load (5400 Pascal).



### Durability Against Extreme Environmental Conditions

High salt mist and ammonia resistance certified by TUV NORD.



## LINEAR PERFORMANCE WARRANTY

12 Year Product Warranty • 25 Year Linear Power Warranty  
0.55% Annual Degradation Over 25 years

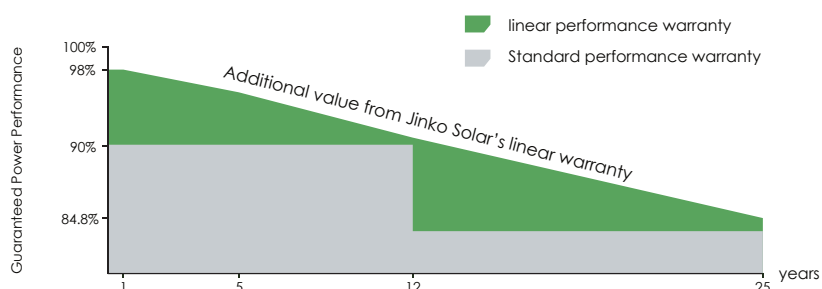


- ISO9001:2015, ISO14001:2015, ISO45001:2018 certified factory
- IEC61215(2016), IEC61730(2016) certified product

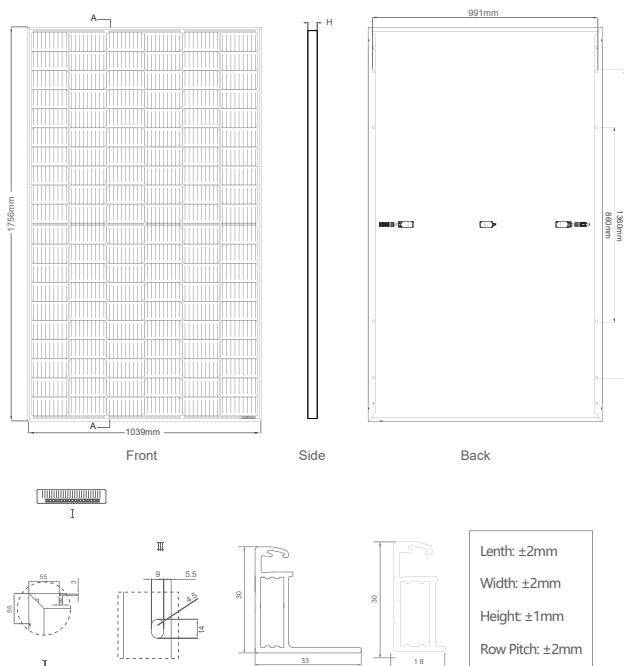
Nomenclature:

JKMxxxM-60/72HLM-(V)

| Code | Cell | Code | Certification |
|------|------|------|---------------|
| null | Full | null | 1000V         |
| H    | Half | V    | 1500V         |



## Engineering Drawings

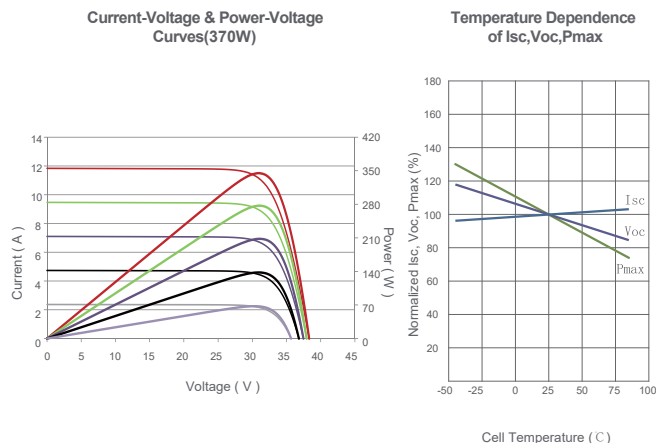


## Packaging Configuration

(Two pallets = One stack) \*For Standard Packing

35pcs/pallet, 70pcs/stack, 910pcs/40' HQ Container \*(Standard Packing)

## Electrical Performance & Temperature Dependence



## Mechanical Characteristics

|               |   |
|---------------|---|
| Cell Type     | Mono PERC 166×166mm   |
| No. of cells  | 120 (6×20)  |
| Dimensions    | 1756×1039×30mm (69.07×40.97×1.18 inch)                                      |
| Weight        | 21kg (46.3lbs)  |
| Front Glass   | 3.2mm, Anti-Reflection Coating, High Transmission, Low Iron, Tempered Glass |
| Frame         | Anodized Aluminium Alloy  |
| Junction Box  | IP67 Rated  |
| Output Cables | TUV 1×4.0mm <sup>2</sup><br>(+): 290mm, (-): 145 mm or Customized Length    |

## SPECIFICATIONS

| Module Type                               | JKM355M-60HLM      |        | JKM360M-60HLM   |        | JKM365M-60HLM   |        | JKM370M-60HLM   |        | JKM375M-60HLM   |        |
|---|--------------------|--------|-----------------|--------|-----------------|--------|-----------------|--------|-----------------|--------|
|   | JKM355M-60HLM-V    |        | JKM360M-60HLM-V |        | JKM365M-60HLM-V |        | JKM370M-60HLM-V |        | JKM375M-60HLM-V |        |
|   | STC                | NOCT   | STC             | NOCT   | STC             | NOCT   | STC             | NOCT   | STC             | NOCT   |
| Maximum Power (Pmax)                      | 355Wp              | 264Wp  | 360Wp           | 268Wp  | 365Wp           | 272Wp  | 370Wp           | 275Wp  | 375Wp           | 279Wp  |
| Maximum Power Voltage (Vmp)               | 33.81V             | 30.75V | 34.00V          | 31.14V | 34.18V          | 31.36V | 34.36V          | 31.57V | 34.53V          | 31.70V |
| Maximum Power Current (Imp)               | 10.50A             | 8.59A  | 10.59A          | 8.60A  | 10.68A          | 8.66A  | 10.77A          | 8.72A  | 10.86A          | 8.80A  |
| Open-circuit Voltage (Voc)                | 40.39V             | 38.04V | 40.58V          | 38.22V | 40.76V          | 38.39V | 40.94V          | 38.56V | 41.12V          | 38.73V |
| Short-circuit Current (Isc)               | 11.23A             | 9.07A  | 11.32A          | 9.14A  | 11.41A          | 9.22A  | 11.50A          | 9.29A  | 11.59A          | 9.36A  |
| Module Efficiency STC (%)                 | 19.46%             |        | 19.73%          |        | 20.01%          |        | 20.28%          |        | 20.55%          |        |
| Operating Temperature(°C)                 | -40°C~+85°C        |        |                 |        |                 |        |                 |        |                 |        |
| Maximum system voltage                    | 1000/1500VDC (IEC) |        |                 |        |                 |        |                 |        |                 |        |
| Maximum series fuse rating                | 20A                |        |                 |        |                 |        |                 |        |                 |        |
| Power tolerance                           | 0~+3%              |        |                 |        |                 |        |                 |        |                 |        |
| Temperature coefficients of Pmax          | -0.35%/°C          |        |                 |        |                 |        |                 |        |                 |        |
| Temperature coefficients of Voc           | -0.29%/°C          |        |                 |        |                 |        |                 |        |                 |        |
| Temperature coefficients of Isc           | 0.048%/°C          |        |                 |        |                 |        |                 |        |                 |        |
| Nominal operating cell temperature (NOCT) | 45±2°C             |        |                 |        |                 |        |                 |        |                 |        |

\* STC: Irradiance 1000W/m<sup>2</sup> Cell Temperature 25°C AM=1.5

NOCT: Irradiance 800W/m<sup>2</sup> Ambient Temperature 20°C AM=1.5 Wind Speed 1m/s

\* Power measurement tolerance: ± 3%